



AQUIND Limited

AQUIND INTERCONNECTOR

Environmental Statement Addendum 3 – Appendix 3.6 Offshore approach figure

The Planning Act 2008

The Infrastructure Planning (Applications: Prescribed Forms and Procedure) Regulations
2009 – Regulation 5(2)(a)

The Infrastructure Planning (Environmental Impact Assessment) Regulations 2017

Document Ref: 7.8.3.6

PINS Ref.: EN020022

AQUIND Limited

AQUIND INTERCONNECTOR

**Environmental Statement Addendum 3 –
Appendix 3.6 Offshore approach figure**

PINS REF.: EN020022

DOCUMENT: 7.8.3.6

DATE: 28 APRIL 2023

WSP

WSP House

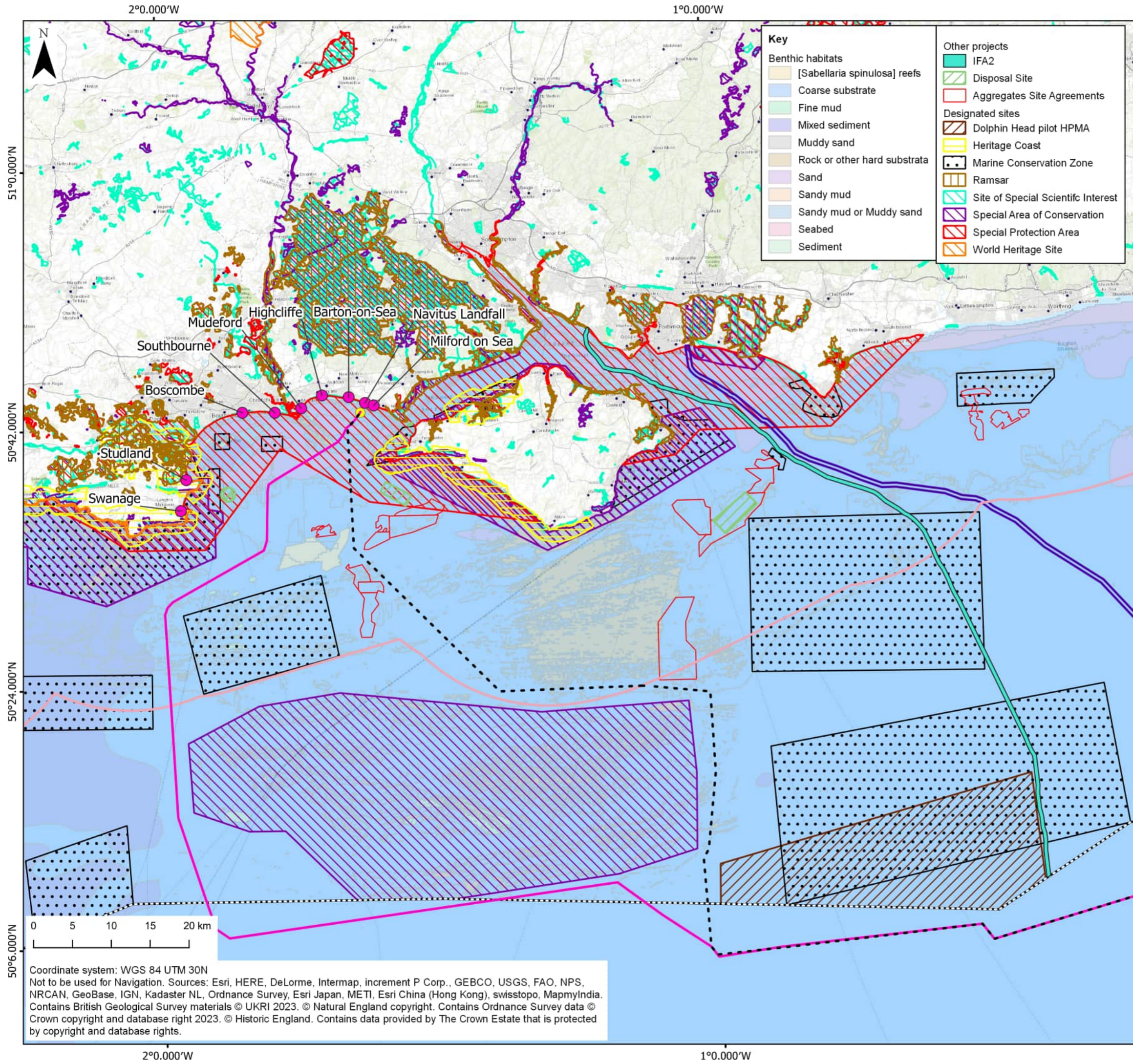
70 Chancery Lane

London

WC2A 1AF

+44 20 7314 5000





Key

Benthic habitats

- [Sabellaria spinulosa] reefs
- Coarse substrate
- Fine mud
- Mixed sediment
- Muddy sand
- Rock or other hard substrata
- Sand
- Sandy mud
- Sandy mud or Muddy sand
- Seabed
- Sediment

Other projects

- IFA2
- Disposal Site
- Aggregates Site Agreements
- Designated sites
- Dolphin Head pilot HPMA
- Heritage Coast
- Marine Conservation Zone
- Ramsar
- Site of Special Scientific Interest
- Special Area of Conservation
- Special Protection Area
- World Heritage Site

AQUIND Interconnector

- Marine cable corridor
- W1 route
- W2 route
- Landfall location
- Indicative Downton Farmers Field HDD exit
- Exclusive Economic Zone
- 12 nautical mile limit

The Infrastructure Planning (Environmental Impact Assessment) Regulations 2017.

REV	DATE	BY	DESCRIPTION	CHK	APP
01	28/03/2024	JO	FIRST DRAFT	SM	SL

DRAWING STATUS: **Approved**



natural power

The Natural Power Consultants Limited, The Green House
Forrest Estate, Dalry, Castle Douglas, DG7 3XS, UK
Tel: +44 (0)1644 430008 www.naturalpower.com

CLIENT:



PROJECT:

AQUIND Interconnector

TITLE:

Offshore Approach

SCALE AT A3: 1:475,000	CHECKED: SM	APPROVED: SL
PROJECT NO: EN020022	DESIGNED: JO	DRAWN: JO
		DATE: 31/03/2023
DRAWING NO: EN020022	REV.NO: 01	

GB201394_M_153_A

© WSP UK Ltd

Coordinate system: WGS 84 UTM 30N
Not to be used for Navigation. Sources: Esri, HERE, DeLorme, Intermap, increment P Corp., GEBCO, USGS, FAO, NPS, NRCAN, GeoBase, IGN, Kadaster NL, Ordnance Survey, Esri Japan, METI, Esri China (Hong Kong), swisstopo, MapmyIndia. Contains British Geological Survey materials © UKRI 2023. © Natural England copyright. Contains Ordnance Survey data © Crown copyright and database right 2023. © Historic England. Contains data provided by The Crown Estate that is protected by copyright and database rights.